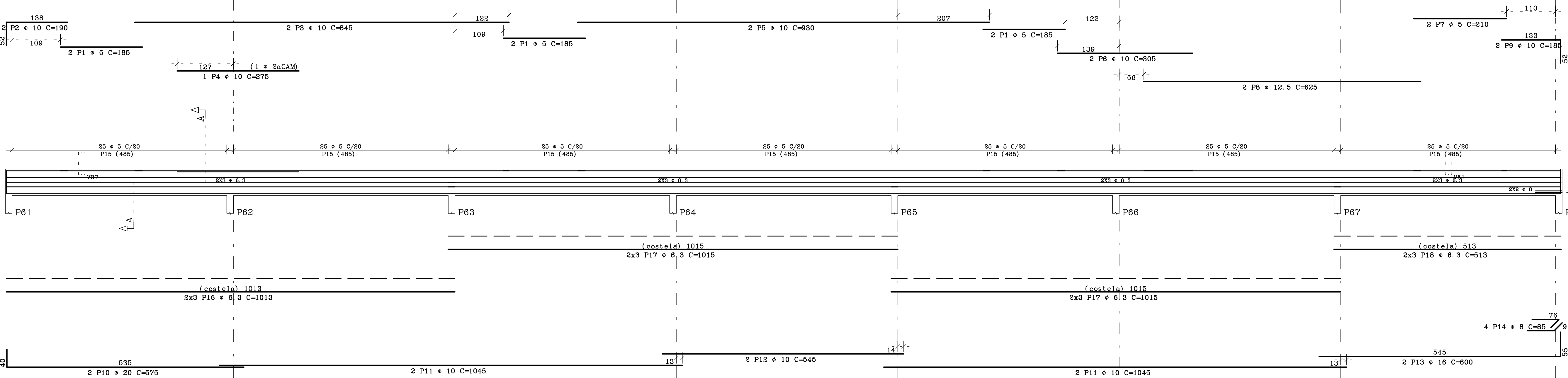
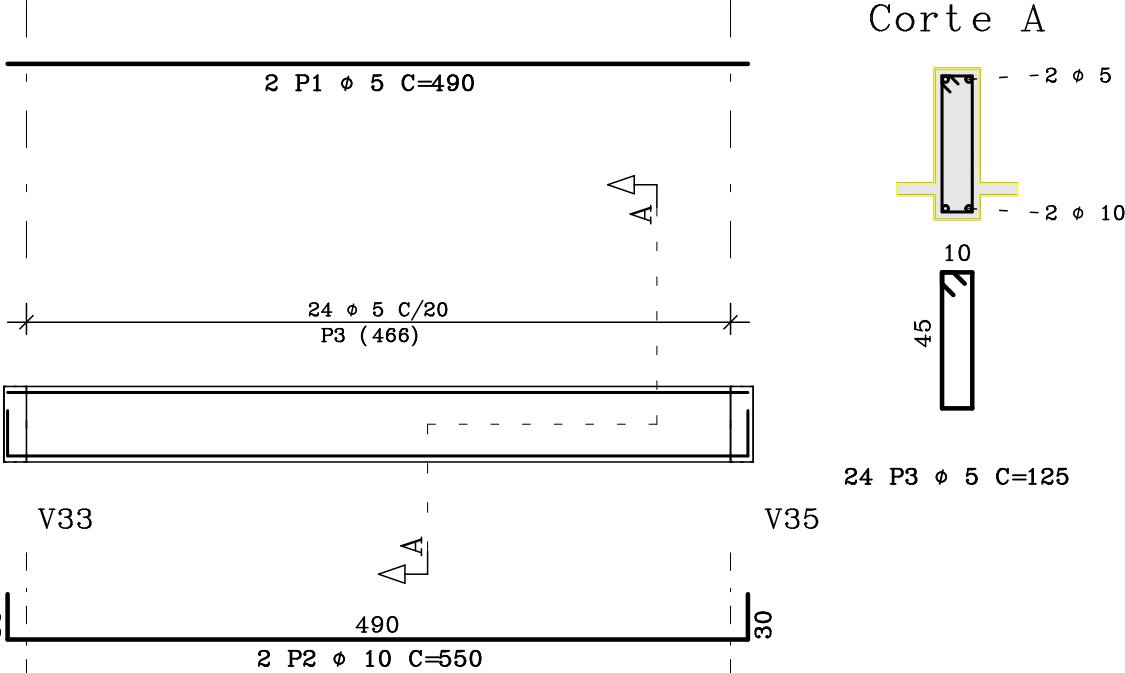


V14 15/60



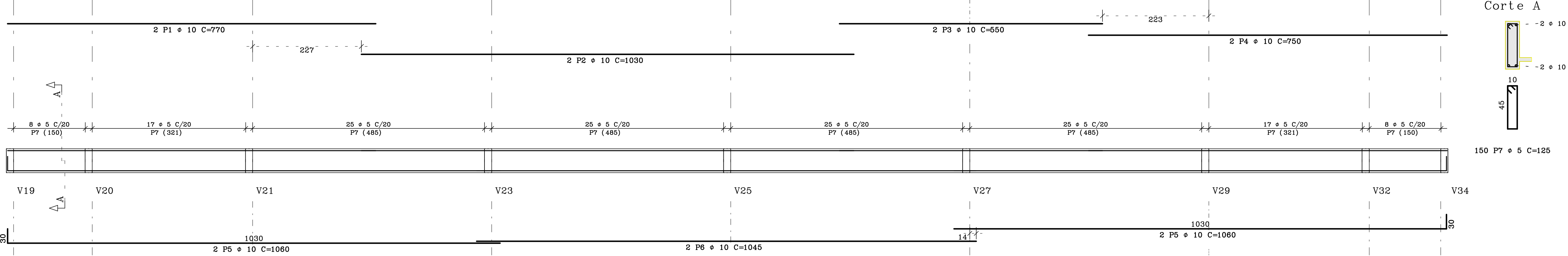
V16 15/50



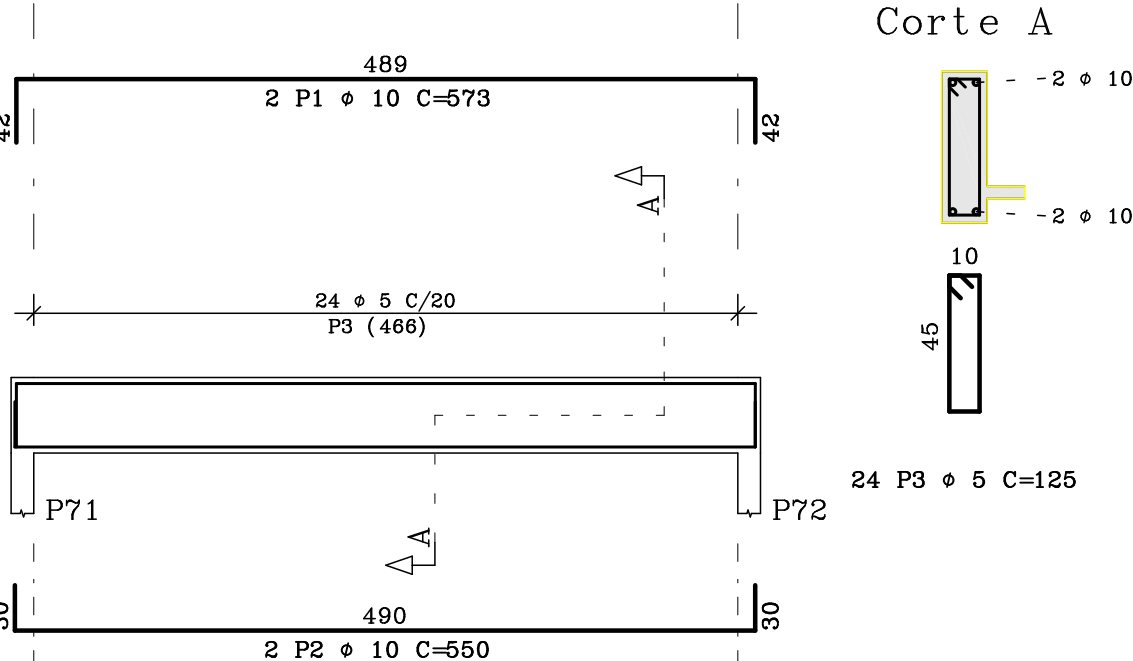
	ACO	POS	BIT (mm)	QUANT	COMPRIMENTO UNIT (cm)	TOTAL (cm)
V14	50A	2	10	2	185	1110
	50A	3	10	2	845	1690
	50A	4	10	2	275	550
	50A	5	10	2	830	1660
	50A	6	10	2	305	610
	50A	9	10	2	210	420
	50A	8	12.5	2	625	1250
	50A	11	10	2	185	370
	50A	10	20	2	575	1150
	50A	13	16	2	1045	2090
	50A	12	10	2	545	1090
	50A	15	5	175	145	25375
	50A	14	8	4	85	340
	50A	16	6.3	6	1013	6078
V15	50A	17	6.3	12	1015	12180
	50A	18	6.3	8	515	3075
	50A	1	10	2	770	1540
	50A	2	10	2	1030	2060
V16	50A	3	10	2	550	1100
	50A	4	10	2	750	1500
	50A	5	10	4	1060	4240
	50A	6	10	2	1445	2890
V17	50A	7	5	150	125	18750
	50A	1	10	4	750	3000
	50A	2	10	4	1050	4200
	50A	3	10	4	1060	4240
V18	50A	4	10	2	1045	2090
	50A	5	10	2	945	1890
	50A	6	5	174	125	21750
	50A	1	10	2	573	1146
V19	50A	2	10	2	550	1100
	50A	3	5	24	125	3000
	50A	1	10	4	750	3000
	50A	2	10	4	1050	4200
V20	50A	3	10	2	645	1290
	50A	4	10	2	1005	2010
	50A	5	10	2	780	1560
	50A	6	5	87	125	10875
V21	50A	1	20	2	685	1370
	50A	2	10	2	180	360
	50A	3	16	2	814	1628
	50A	4	5	40	125	5000
V22	50A	1	20	2	682	1364
	50A	2	10	2	180	360
	50A	3	16	2	815	1630
	50A	4	5	40	125	5000
V23	50A	1	20	2	682	1364
	50A	2	10	2	180	360
	50A	3	20	2	798	1596
	50A	4	5	47	125	5875
V24	50A	1	20	2	682	1364
	50A	2	10	2	180	360
	50A	3	20	2	798	1596
	50A	4	5	47	125	5875

RESUMO ACO CA 50-60			
ACO	BIT (mm)	COMPR (m)	PESO (kg)
50A	5	1190	190
50A	6.3	213	53
50A	8	10	1
50A	10	572	360
50A	12.5	30	30
50A	16	45	71
50A	20	88	245
Peso Total			60 = 190 kg
Peso Total			50A = 761 kg

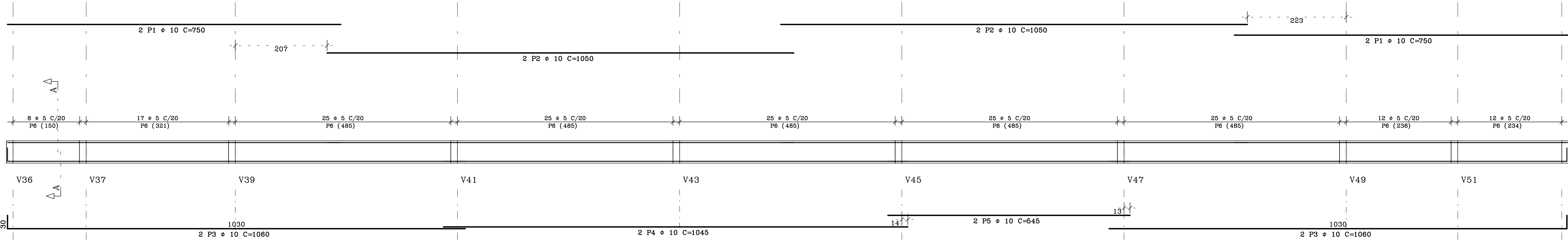
V15 15/50



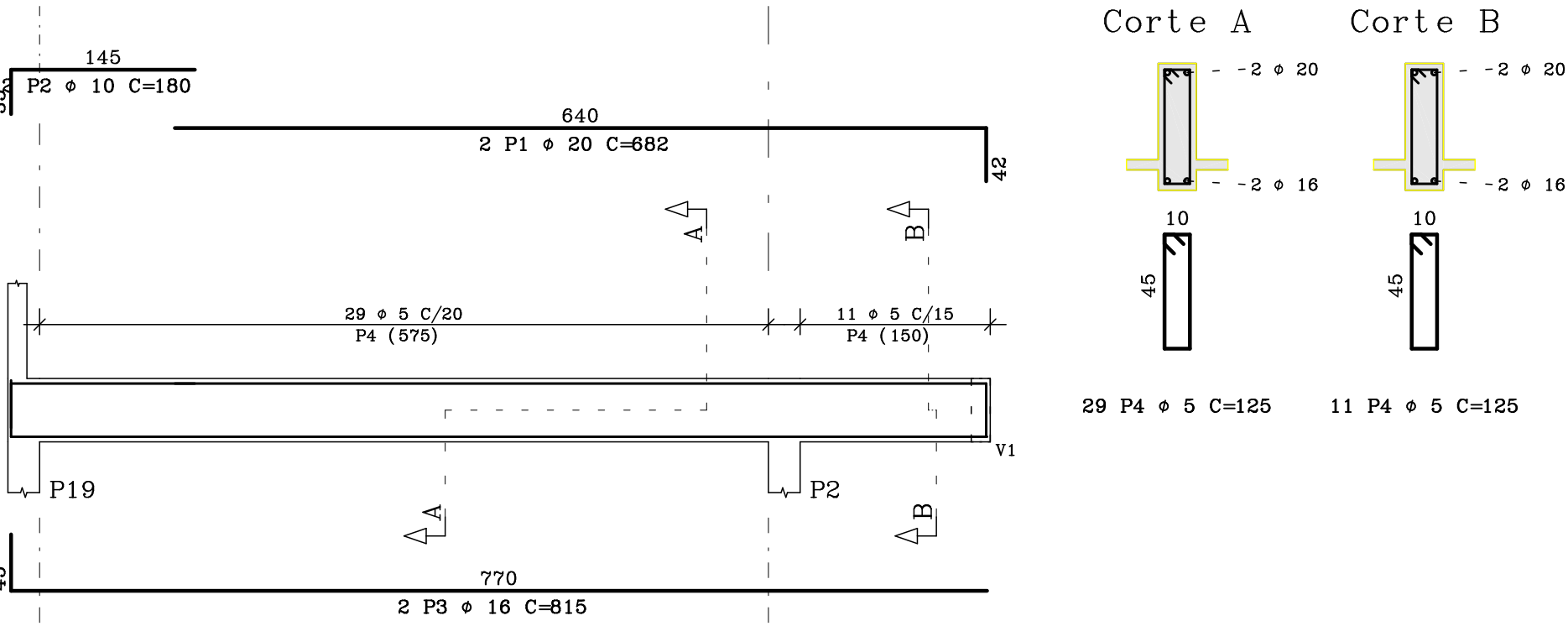
V18 15/50



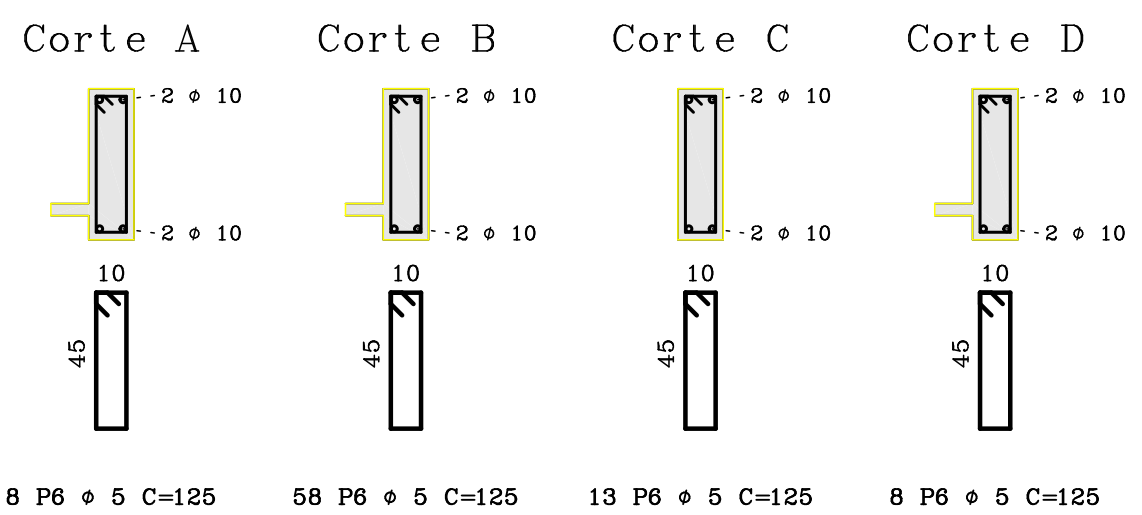
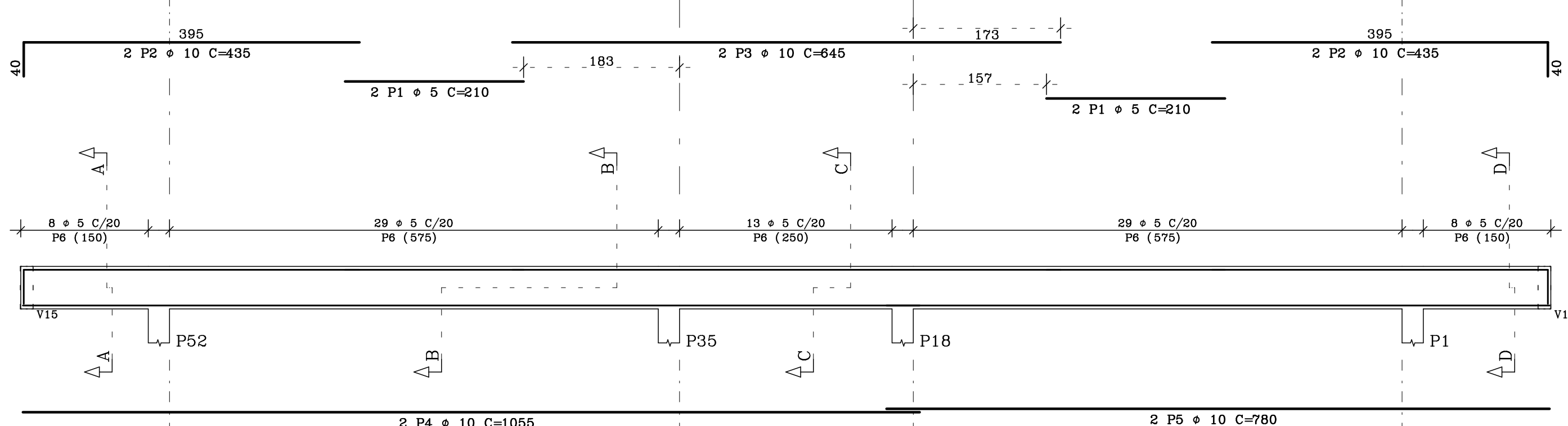
V17 15/50



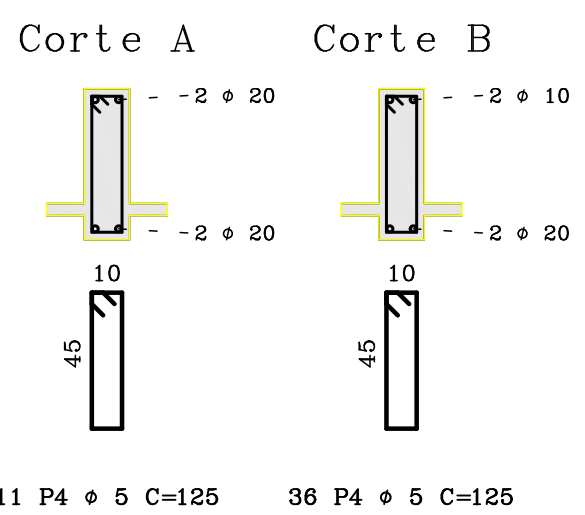
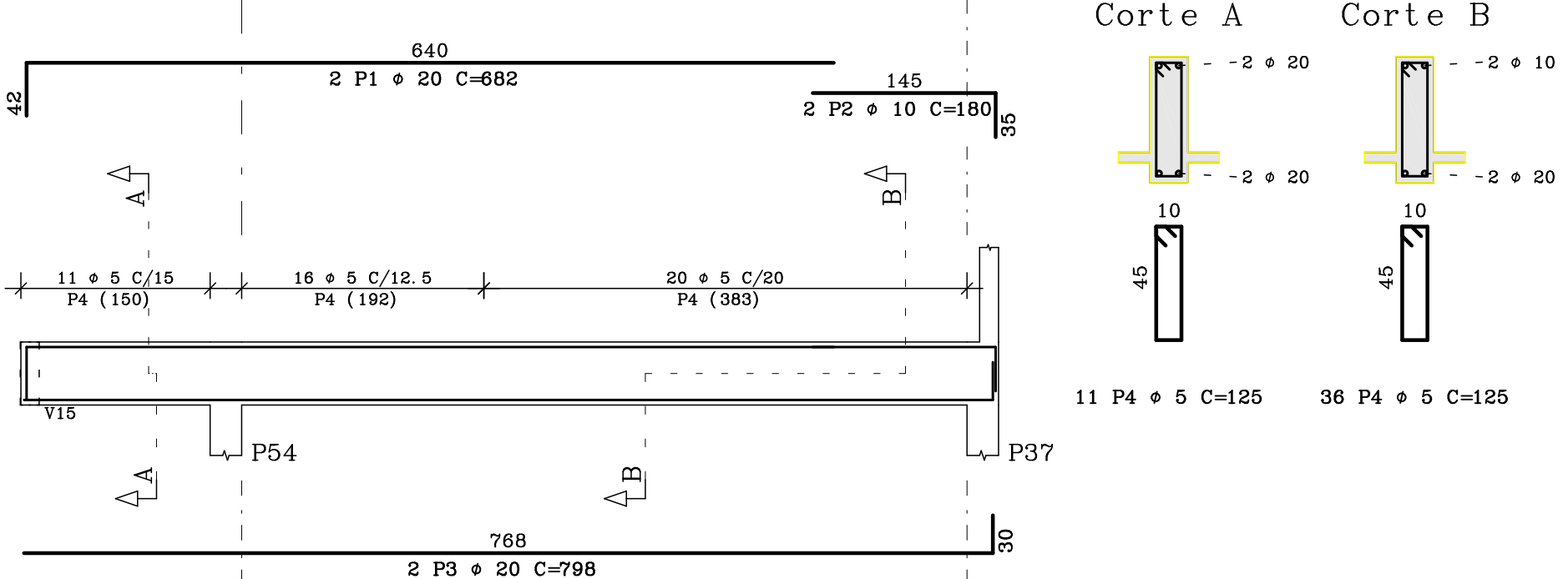
V22 15/50



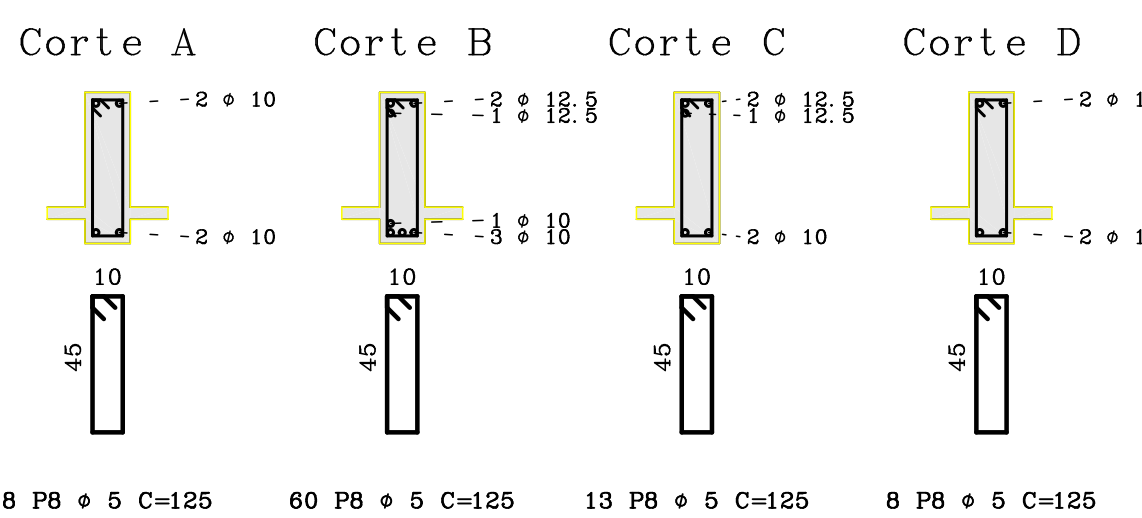
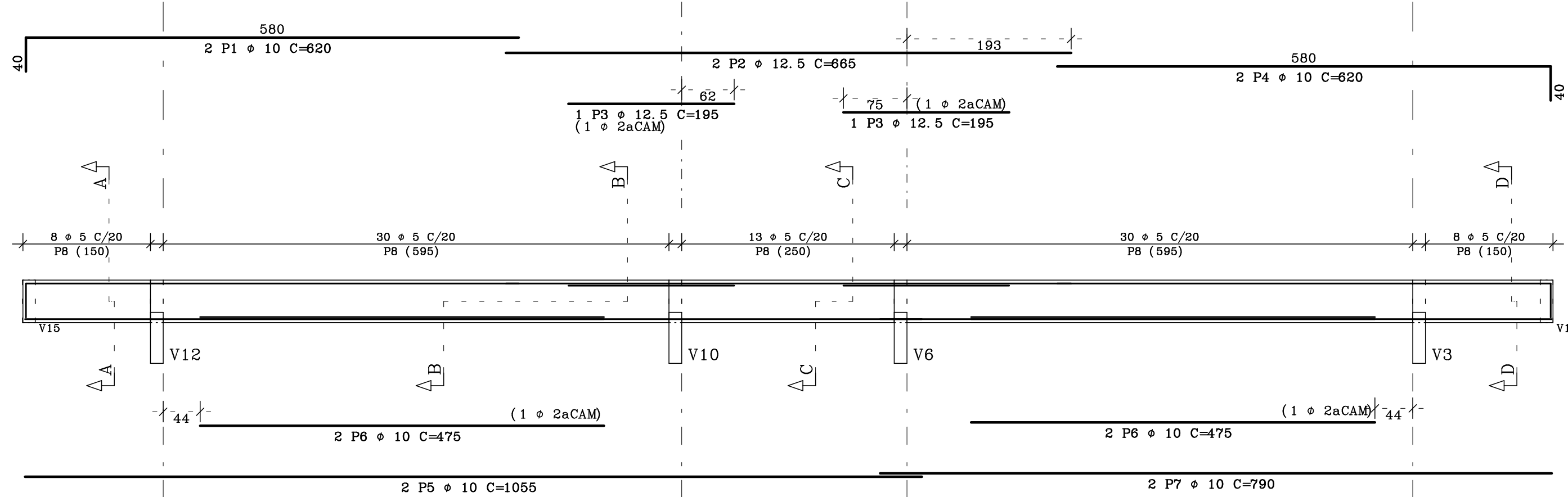
V19 15/50



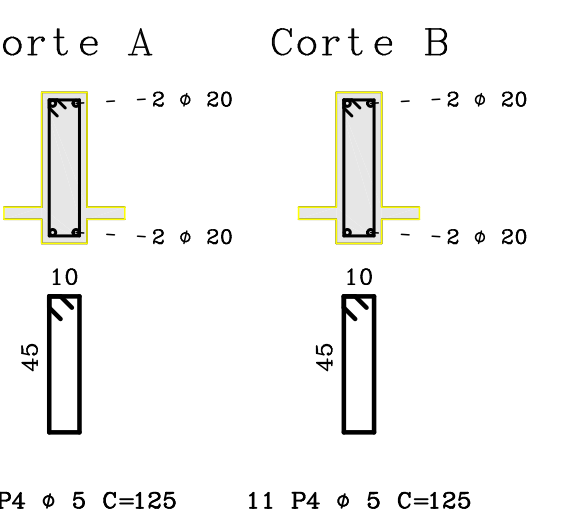
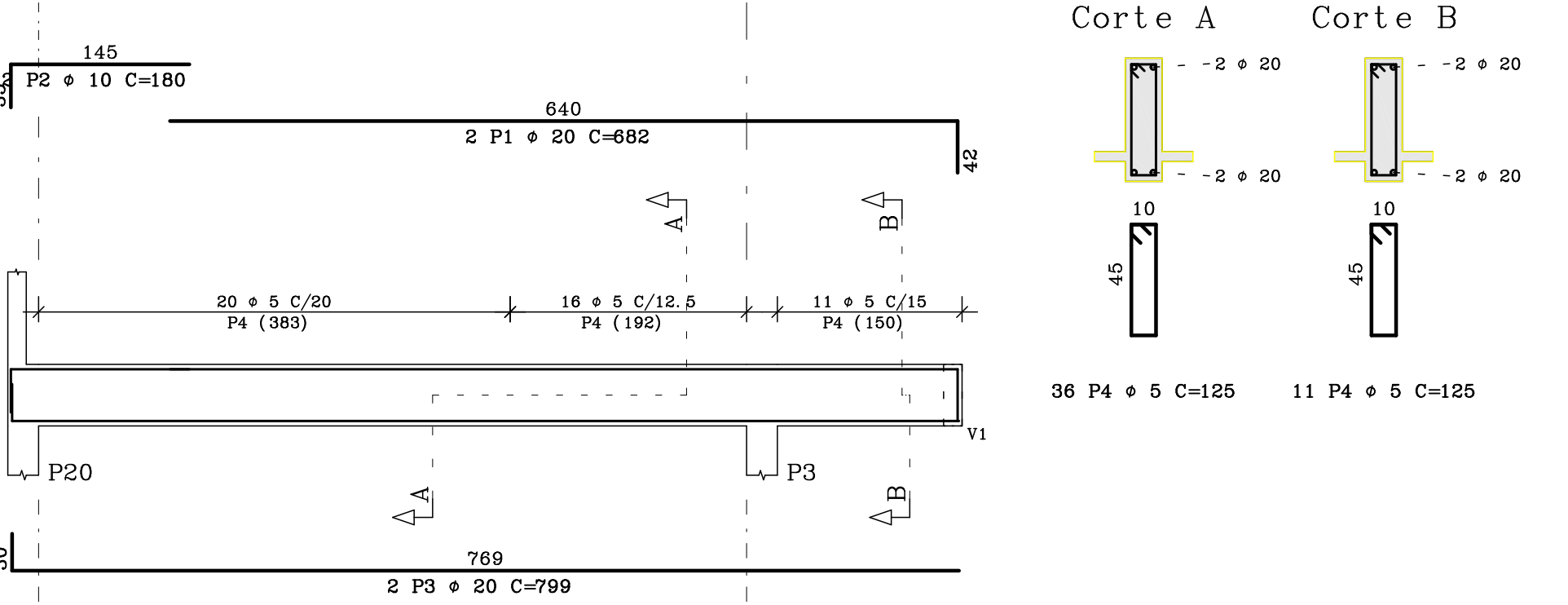
V23 15/50



V20 15/50



V24 15/50



10			
09			
08			
07			
06			
05			
04			
03			
02			
01			
REVISÃO	ALTERAÇÕES	DATA	VISTO
MEDIDAS EM CENTÍMETROS E NÍVEIS EM METROS			
VERIFICAR MEDIDAS E NÍVEIS NA OBRA			
PROPRIETÁRIO			
PROJETO			
RESPONSÁVEL PELA OBRA			
OBRA		CLIENTE	
UNIVERSIDADE FEDERAL DE ALAGOAS		UFAL	
FACULDADE DE MEDICINA - UNIDADE DE SAÚDE			
CAMPUS A. C. SIMÕES - TABULEIRO DOS MARTINS			
MACRIO- ALAGOAS.			
ESPÉCIE:		CONCRETO	
ARMACÕES DAS VIGAS DA COBERTA		fck ≥ 25 MPa	
CÓDIGO		CÁLCULO	
CÓD. EMPREEND.		EMP. CIVIL	
F M A - E S T - P E		RAMON LUCIO	
CÓDIGO		CÁLCULO	
CÓD. EMPREEND.		EMP. CIVIL	
F M A - E S T - P E		RAMON LUCIO	
CÓDIGO		CÁLCULO	
CÓD. EMPREEND.		NUM	QUANT
F M A - E S T - P E			REVISÃO
F M A - E S T - P E		007/000-000	